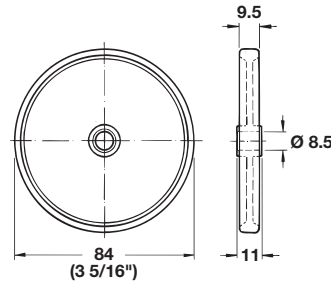


Casters for Furniture and Special Applications



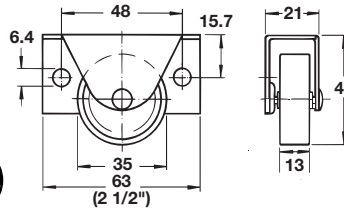
Bed Box wheel

Load capacity per wheel approx. 40 kg (88 lbs.)

Finish: plastic

Color	Cat. No.
brown	660.97.103
white	660.97.701

Packing: 100 pcs.



Bed Box caster

with screw-on mounting plate

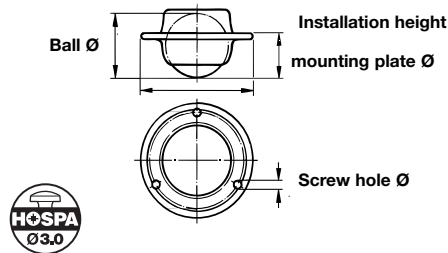
Load capacity per caster 40 kg (88 lbs.)

Finish: Housing: steel

Wheel: hard plastic

Finish	Cat. No.
zinc-plated, white wheel	660.98.904
black zinc, black wheel	660.98.304

Packing: 500 pcs.



Ball casters

with screw-on mounting plate

Finish: Housing: steel, yellow chromate with reinforced base

Ball: steel, chrome-plated

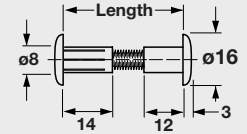
Ball Ø	13 mm	20 mm	25 mm
Approx. load capacity of each caster	6 kg (13 lbs.)	12 kg (26 lbs.)	17 kg (37 lbs.)
Installation height	10 mm	15 mm	20 mm
Ø insert part	16 mm	23.5 mm	33 mm
Insert depth	5.5 mm	8.5 mm	12 mm
Mounting plate Ø	25 mm	35 mm	45 mm
Screw hole Ø	2 mm	3 mm	3 mm
Cat. No.	661.02.210	661.02.230	661.02.250

Packing: 100 pcs.

HÄFELE



- Excellent running characteristics on deep piled carpets due to the wide running surface and large wheel diameter.
- Particularly suited for under-bed storage boxes.



Plastic Connecting Screw

Ideal for attaching bed box wheel

Finish: plastic, steel bolt

Cat. No.	Finish/length
267.06.102	brown, plastic/30-36 mm
267.06.702	white, plastic/30-36 mm
267.06.103	brown, plastic/35-41 mm
267.06.703	white, plastic/35-41 mm

Packing: 100 pcs.

- Bed box casters feature a wide tread for easy movement on carpeted floors.
- The side mounting facility and low height make this caster particularly suitable for installation in situations with limited clearance.

- The ball casters can be moved in any direction.
- When mounted upside down they can be used as a conveyor system for transporting heavy loads.

Tables, Legs, Casters, Levelers and Office Organization

Dimensional data not binding. We reserve the right to alter specifications without notice.